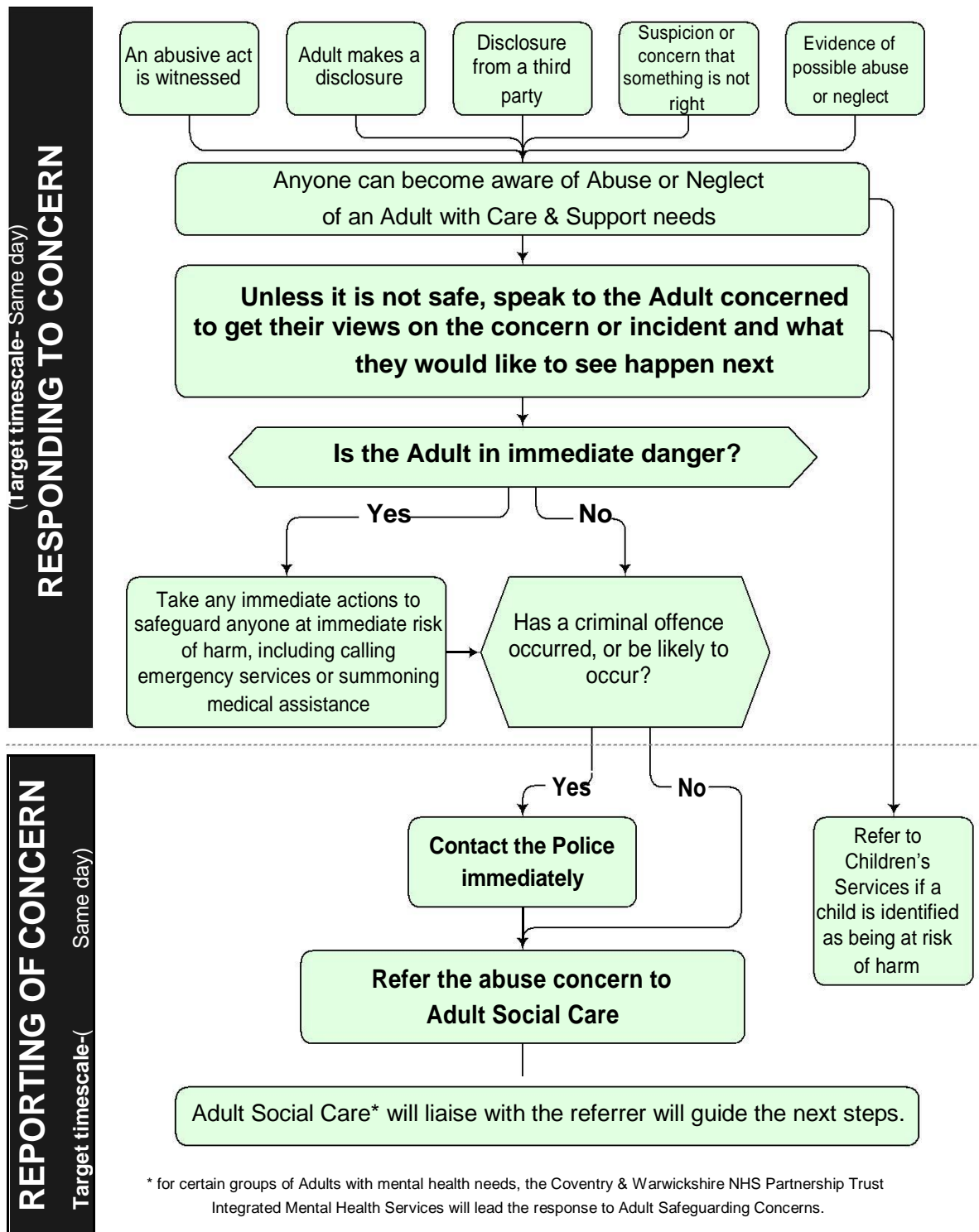


# A guide to Recognising & responding to the Abuse or Neglect of Adults with care & support needs

## Flowchart - Referral Pathways for the Safeguarding Alert 1.3.6.

This flowchart gives an overview summary of referral pathways. Please note it does not include other responsibilities which need to be considered through this process, such as preserving evidence and providing appropriate support to victims.



# A guide to Recognising & responding to the Abuse or Neglect of Adults with care & support needs

## *Reporting Adult Safeguarding Concerns*

<p><b>All abuse or neglect concerns relating to adults with care &amp; support needs should be reported to Warwickshire County Council</b> by telephone on the Adult Safeguarding single point of referral contact number</p>	<p><b>01926 41 20 80</b></p>
<p><b>If the abuse or neglect is very serious,</b> or a criminal offence has occurred or may occur, contact the Police immediately</p>	<p style="text-align: center;">Warwickshire Police:</p> <p style="text-align: center;">To report abuse or raise a concern about a crime, dial non-emergency - <b>01926 415 000</b>.</p> <p style="text-align: center;">If a <b>crime is in progress or life is at risk</b>, dial</p> <p style="text-align: center;">Emergency - <b>999</b>.</p> <p style="text-align: center;">Then make the referral to Adult Social Care- as above.</p>
<p><b>Referrals outside office hours</b> will be directed to the Warwickshire County Council Emergency Duty Service. The EDS can be contacted directly outside office hours (Right)</p> <ul style="list-style-type: none"> <li>• The Emergency Duty Service will             <ul style="list-style-type: none"> <li>• Respond to Safeguarding Adults referrals out of hours and make a decision whether the referral requires an immediate response or whether they will transfer to the appropriate Adult Social Care the next working day,</li> <li>• Respond to the immediate support and protection needs of adults referred out of hours,</li> <li>• Report suspected criminal offences to the Police without delay.</li> </ul> </li> </ul>	<p><b>01926 886922.</b></p>
<p><b>If a child is identified at being at risk</b> of harm, refer to Children's services as soon as possible.</p>	<p>Warwickshire Children's Services - <b>01926 410 410.</b></p>

Referrals relating to adults (aged 18-65) who have mental health needs will be signposted to the appropriate Integrated Adult Mental Health Service to respond to the concern.